

CERTIFIED LAND CORNER RECORDATION

DESCRIPTION OF CORNER EVIDENCE FOUND, AND ORIGINAL RECORD (If known)

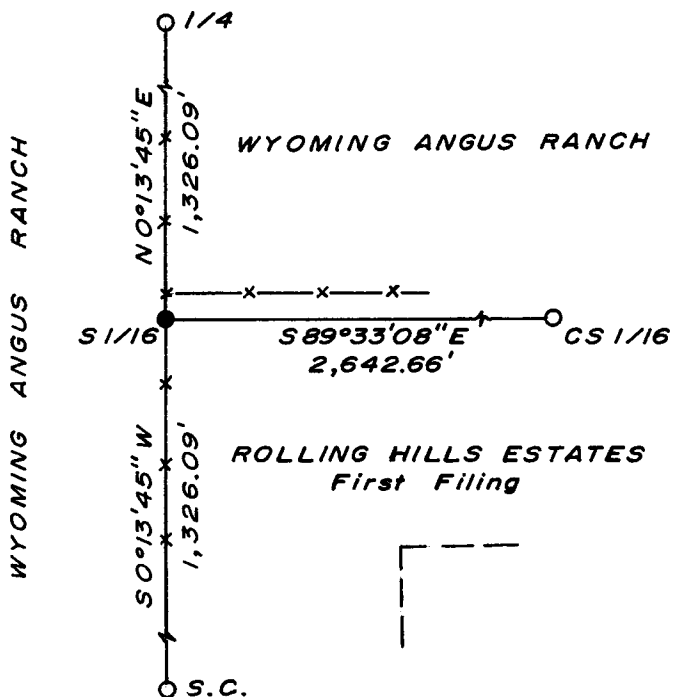
LOCATION
 S 1/16
 S.29 S.28
 T.14N., R.67W.
 6th P.M.

Corner established by this survey.

DESCRIPTION OF MONUMENT AND ACCESSORIES ESTABLISHED TO PERPETUATE THE ORIGINAL LOCATION OF THIS CORNER:

At the corner: Set 1 1/2" dia. x 30" long iron pipe with brass cap.
 Accessories: None

SKETCH, WITH COURSE AND DISTANCE TO ADJACENT CORNER IF DETERMINED IN THIS SURVEY.
 (May Sketch or Paste Reproduction on Reverse Side.)



Brass cap set 4" above ground.
 Brass cap stamped:
 S.1/16
 S.29 S.28
 LS 519 1973

I, R.L. Hudson certify that I have carefully performed ~~or reviewed~~ the work done on the diagrammed corner as reported on this recordation form and approve the same.

R.L. Hudson Wyoming L.S. No. 519
 Signature of Surveyor Registration No.

STATE OF WYOMING,
 Office of Clerk and Recorder,
 County of _____

This "corner record" was filed for record on the 19 day of November, 1972, was noted on the cross-index plat and is assigned page No. _____, in book No. _____.

John B. Husman
 County Official

Cross Index No. <u>49</u>	T. <u>14</u>	R. <u>67</u>	<u>6</u> Mer.
_____	T. _____	R. _____	Mer.
_____	T. _____	R. _____	Mer.
_____	T. _____	R. _____	Mer.
_____	T. _____	R. _____	Mer.
_____	T. _____	R. _____	Mer.
_____	T. _____	R. _____	Mer.

Photographed

Indexed

Posted

Assessor

County Assessor } So

... was filed for record at 1019 o'clock A.M. on the 19 day of November A. D. 19 73 and duly recorded in Book ... on page ...

John B. Williams

County Clerk & Ex-Officio Registrar of Deeds
By *JB* Deputy